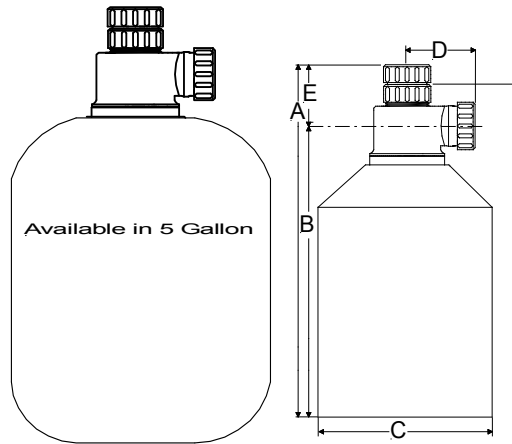


Anti-Siphon Dilution Trap

Anti-siphon dilution traps may be used with limestone chips for neutralization. They are available in 1, 2, 5 gallon sizes for under counter applications. The inlet and outlet locations are fixed as shown in diagram. All tanks should be supported from below.



ALL ANTI-SIPHON TANKS ARE MADE FROM VIRGIN POLYPROPYLENE

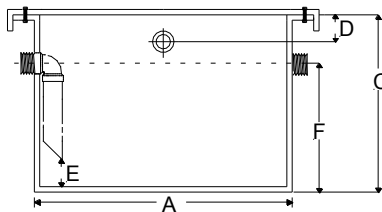
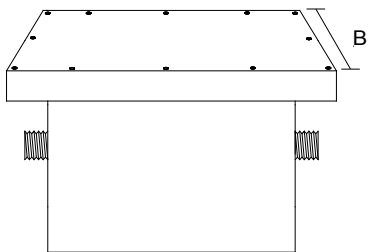


All units 1-1/2" National Pipe Thread.

SYMBOL	CAPACITY	A	B	C	D	E	
						MIN	MAX
W31586-151	1 GAL.	11-3/4"	9"	7-1/2"	2-7/8"	2-1/2"	7-1/2"
W31586-152	2 GAL.	17"	14-1/4"	7-1/2"	2-7/8"	3-1/2"	13-1/2"
W31586-153	5 GAL.	19-1/2"	17"	11-1/2"	2-7/8"	3-1/2"	13-1/2"

Rectangular Dilution Tanks 2,5,15 gal.

Our tanks are specifically designed for under the bench use for low volume flow applications. They are a dual purpose trap and chemical waste dilution / neutralization tank. The tank is designed with bolted cover lid. When used without limestone chips the tank serves as a dilution basin/trap. When used with limestone chips the tank serves as a point of use neutralization tank/trap. (ALL DIMENSIONS ARE IN INCHES)



Part #	A	B	C	D	E	F	Gallons
W32502-151	8"	8"	8"	1.5"	2"	5"	2
W32805-151	10"	16"	8"	1.5"	2"	5"	5
W32815-151	12"	24"	12"	2"	4"	7"	15

Tanks should be of seamless construction, rotationally molded in the USA. From HD polyethylene resin conforming to ASTM D-1998-06 and ASTM D-4976. External fittings conforming to ASTM F-1412, shall be polyfused and/or welded to the tank, and be provided with the inlet dip pipe extending down to the bottom. The effluent must be discharged at the bottom of the tank to maximize dwell time. Covers are either bolted down or welded to the tank. The inside bottom of the tank shall be flat with no recessed areas where acid waste or other contaminants can pool.