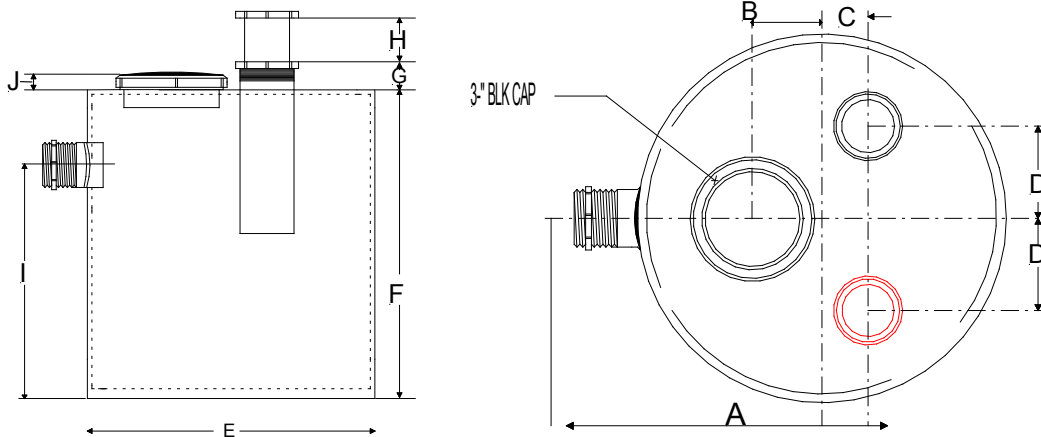


## Dilution Tank /Trap - 2 Gallons

Our tank's compact design allows for easy fitting in tight spaces. Standard connections are 1-1/2" female threaded inlet and 1-1/2" male threaded outlet. A 3" cleanout is mounted on the tank top to facilitate inspection and maintenance. Single or dual inlets can be provided. The standard tank configuration is shown. Additional configurations can be produced to match customer requirements. May be used as plaster or sedimentation traps.



WHEN TANK IS ORDERED WITH 1 INLET  
THE STD LOCATION IS MARKED IN RED.

COLOR	PART #	A	B	C	D	E	F	G	H	I	J	INLET	# OF INLET	OUT-LET
BLACK	W59155-200	7-5/16"	2-1/2"	1-3/16"	2-1/16"	9"	10-5/32"	1-15/16"	0-10	6-13/16"	1-5/8"	1-1/2"	2	2"
BLACK	W59155-201	7-5/16"	2-1/2"	1-3/16"	2-1/16"	9"	10-5/32"	1-15/16"	0-10	6-13/16"	1-5/8"	1-1/2"	1	2"
BLACK	W5915-202	7-5/16"	2-1/2"	1-3/16"	2-1/16"	9"	10-5/32"	1-15/16"	0-10	6-13/16"	1-5/8"	2"	1	2"
BLACK	W59155-203	7-5/16"	2-1/2"	1-3/16"	2-1/16"	9"	10-5/32"	1-15/16"	0-10	6-13/16"	1-5/8"	2"	2	2"

ALSO AVAILABLE IN TRANSLUCENT WHITE W59156

Tanks should be of seamless construction, rotationally molded in the USA. From HD polyethylene resin conforming to ASTM D-1998-06 and ASTM D-4976. External fittings conforming to ASTM F-1412, shall be polyfused and/or welded to the tank, and be provided with the inlet dip pipe extending down to the bottom. The effluent must be discharged at the bottom of the tank to maximize dwell time. Covers are either bolted down or welded to the tank. The inside bottom of the tank shall be flat with no recessed areas where acid waste or other contaminants can pool.